

## Reinstatement of Rosenstrasse in Ochtrup, Germany - HaTelit® proves a long-term success -



*Condition of Rosenstrasse in April 2009*

### Background:

Rosenstrasse in Ochtrup leads directly to the Dutch/German border and therefore carried an extremely high volume of heavy goods vehicles until the completion of a new bypass in 2005. But even today plenty of local drivers still like to take the shorter route along Rosenstrasse.

In 1996 Rosenstrasse was reinstated over its full carriageway width to rectify substantial damage due to alligator cracking. The initial design called for the existing 5 cm thick asphalt surface course to be milled off and replaced. After milling off the surface course, it was apparent that the binder course and even the base were also severely cracked and in very poor condition. An alternative design was required.

For reasons of finance and time constraints, it was decided to install **HaTelit®** asphalt reinforcement directly on the milled substrate. This measure was intended to prevent early penetration of the existing cracks through the new surface course and therefore extend the period to the next reinstatement.



During the works **HaTelit®** was laid in accordance with the **HaTelit®** installation instructions and then covered with 5 cm asphalt-concrete 0/11 surface course.

### Follow-up:

*June 2002:*

Six years after the reinstatement, the highway maintenance officer responsible for roads in the Steinfurt area made the following statement: "...I am pleased to inform you that the earlier carriageway reinstatement carried out on district route K57 Rosenstrasse using **HaTelit® 30/13** asphalt

## Reinstatement of Rosenstrasse in Ochtrup, Germany - HaTelit® proves a long-term success -



Condition of Rosenstrasse before overlay, May 1996

reinforcement has proved a success in every respect. Up to present, placing the asphalt reinforcement under the asphalt-concrete 0/11 surfacing course has prevented any cracks from appearing in the asphalt-concrete road surface...".

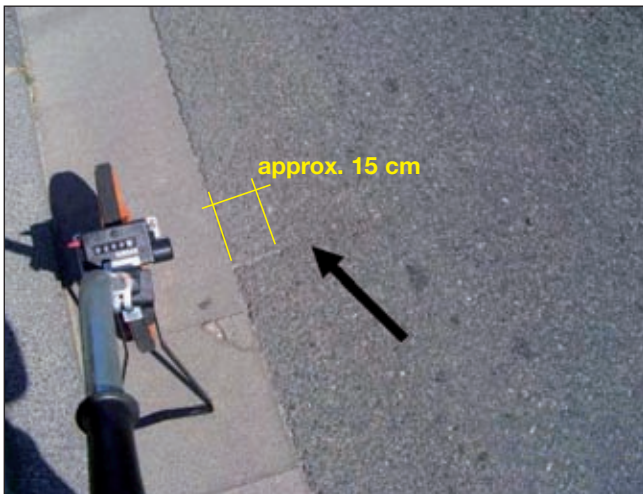
### April 2009:

Almost 13 years after the installation of the asphalt reinforcement, the highway maintenance officer for Ochtrup confirmed in a letter dated 2 April 2009: "I am pleased to inform you that the earlier carriageway reinstatement using asphalt reinforcement has proved a success and at the time of writing has displayed no alligator cracking in the asphalt concrete surface course."

### August / September 2009:

TÜV Rheinland LGA Bautechnik GmbH, Weimar Office has inspected and assessed the condition of the carriageway along the length of Rosenstrasse reinstated in 1996 with respect to crack formation. The visual inspection of the carriageway surface found it to be almost free of damage.

A small amount of transverse cracking was present at one location on the outer edge of the carriageway reinforcement. Small longitudinal cracks were evident at a few other spots which were also on the outer edge. Records of the installation show that no reinforcement is present in the outer edge areas. TÜV Rheinland confirms: "The whole of the rest of the carriageway is free of cracks."



Cracks found in edge area, August 2009

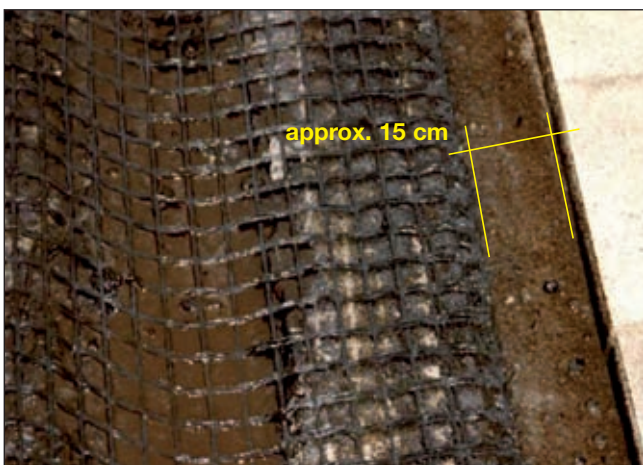
### Conclusion:

The road has remained in perfect condition and further reinstatement has not been necessary. The use of HaTelit® has proved itself a success as a method of reinstatement in every respect.

Project/location: Ochtrup, Rosenstrasse, Germany

Client: Municipality of Steinfurt

Constructed: May 1996



Detail: Distance of reinforcement from the edge

### HUESKER Synthetic GmbH

Fabrikstraße 13-15 • D-48712 Gescher/Germany  
Phone +49(0) 25 42 701 -0 • Telefax +49(0) 25 42 701 -499  
Internet: www.huesker.com • E-mail: info@huesker.de

